



The Grapevine



THE NEWSLETTER OF HAMPTON LUCY, CHARLECOTE AND LOXLEY PARISHES

Issue No: 225

Merry Christmas and a Happy New Year to all!

December 2020
January 2021

'Remembrance' – Hampton Lucy – 2020

Inevitably, due to the Covid lockdown situation, *Remembrance* took a markedly different form this year, both nationally and locally. A dark, wet and chilly evening on 8 November didn't deter a big turnout for a shortened service in the churchyard of St Peter ad Vincula, with everyone suitably masked and socially distanced!

Led by Rev'd John Horton, *Remembrance* was observed next to the candle-lit war grave of Private George Henry Gibbs - an unusual but poignantly appropriate setting.



Churchwardens Alison and Elaine looked after the important details including orders of service and lighted candles, and Rev'd John was assisted by Verger Ali Speller who held the umbrella and torch - both essential!

The traditional *Act of Remembrance* included the reading of the *Role of Honour*, lowering of the standard of the Royal British Legion during the sounding of *The Last Post* and the ensuing 2-minute silence, and the laying of a wreath on the grave by a proud young man, Quinn Noad-Sargent.

The hymn *Eternal Father, Strong to Save* was sung unaccompanied, led by choir members Alison Harrison and Robin Hammond, and the emotive *Kohima Epitaph* concluded a memorable service.

Although enforced by circumstance, the setting proved to be very atmospheric and *Remembrance* was moving, as always. *Thank you* to those who were involved with its organisation.

AJW

Christmas Wishes from Charlecote Mill



Hello all, as this year comes to a close it's a good moment for reflection and to consider how we all coped during difficult times. It also reminds you how resilient you can be! Charlecote Mill (and the Miller) have been tested as production needed to increase from about 90 tons to 120 tons a year, along with losing open days and group tours.

The mill is strong and coped well with the extra demand and we even fitted in some repairs too! I'm considerably lucky to have such wonderful support from family, friends and customers who continue to help and buy from the mill and I and look forward to a more 'normal' 2021 moving forward. I'm sad not to welcome you all for the annual 'Carols at the Mill' but wish you all a Merry Christmas and prosperous New Year. Look after yourselves and stay safe!

KG



The Grapevine

is printed by 'Think, Design and Print', Unit 4b, St Mary's Road, Sydenham Industrial Estate, Leamington, CV31 1PP; e-mail: info@thinkdesignandprint.com The newsletter is published in colour each month. To view the colour version visit the village websites, or request an e-mail copy.



Christmas Parish Letter



Rev'd Dr Andy Larkin

The Rectory,
St Peter's Church,
Barford,
Warwickshire
Tel: 07758 704452
Email:
rectory@barford.co.uk

From Your Vicar

Rev'd John Horton

16 Huntington Court
Lowes Lane
Wellesbourne
CV35 9RF
Tel: 01789 470191
Email:
hortonjohn1949@gmail.com



Dear friends,

This year's Remembrance Sunday seemed so very special. An important date in any normal year but perhaps made more poignant by being in lockdown. Coming just before Advent, Remembrance is perfectly placed to frame our thoughts as we travel towards Christmas.

Just before Remembrance, the election for the President of the United States of America dominated the news. As I periodically checked the Internet to see the latest result, I was struck by how close the voting was. In some cases, within a single percentage point. The political viewpoints of the two main candidates could hardly be further apart and yet there was clearly no common consensus on which was the best way forward.

When we encounter those whose views stand in sharp contradiction to our own, it can generate a guttural reaction as indignation rises from deep within. At a personal level, the difficulty can become to truly 'hear' each other. Our minds and bodies so easily change gear to 'fight or flight'. Key to survival in the ancient world, but this mechanism can shallow our thinking, leaving us making our decisions based on assumption rather than deeper understanding.

Remembrance offers us an important moment to say 'thank you' to those who serve and who served. We recall the names of those who gave their lives and we are reminded of the terror and tragedy of war. We are reminded of what can happen when we allow ourselves to stop listening to each other, to stop searching for deeper understanding, to stop looking for ways to accommodate each other's needs.

Advent provides a wonderful space for reflection. Then comes Christmas Day. Also in a sense, a day of remembrance. We remember a baby born into poverty in an obscure corner of the Roman Empire. Born into a community living under the tension of military occupation. A baby who grew into a man. A man who brought a message of love, generosity and peace. A man who taught that community should be inclusive and that we all share a responsibility to look after those who struggle. A man who claimed to be God. More than two millennia later we will gather to celebrate his birth. Some convinced of his claim. Some disbelieving. Others simply wishing to ponder the mystery. All, welcome.

I've published a rota for our Christmas services. The current pandemic may mean we need to make alterations or move our services online. Whatever the circumstances, you are warmly invited to join in.

Wishing you Christ's peace,

Rev'd Dr Andy Larkin
Rector



Carers4Carers monthly meeting

Carers4Carers is a self-help support group for carers living in Kineton and the surrounding villages and rural area. We offer members a monthly newsletter, telephone support as well as a virtual coffee morning. Look out for joining instructions in our monthly email or contact the number below. New and existing members are always welcome. Do take a look at our website www.carers4carersonthefosse.org.uk, email us at kcarers4carers@gmail.com or call 07947 893504. LB

Grapevine Contact Details

Grapevine copy by the **10th of the month (10 February 2021 for next issue)** please, with a contact telephone number to:
The Editor, Bridie Sullivan Tel: 01789 470977 E-mail: grapevine2@btinternet.com



Ding, Dong Merrily on High



The coronavirus pandemic has been bad enough but earlier this year, I woke up at night in the dark worrying about my broad beans and realised that I did not know what time it was. There were no dings. When I went down to the allotment later that day, there were still no dings. I couldn't tell if it was time for a drink or lunch. People asked me, 'What's happened to the bells?' I thought perhaps it was part of the national pandemic emergency, no dings. Silence. I went round to see the expert: Ali Speller. 'It's broken', he said.

All summer, Hampton Lucy had no clock that struck the time. We all had to adapt. Then, out of the blue one day late in August, the bell started ringing, randomly at first, but then settled down into a familiar routine: never quite on time but close enough!

I went back round to see Ali to find what had happened and he explained that the clockmaker 'Smith of Derby' had not been able to get out because of lockdown. The invoice showed that the repairers had to 'lower the weight' and then assess the damage to the 'rack snail'. More importantly, the bill was £725 plus VAT, a lot of money for a church that cannot carry out any fund-raising events at all.

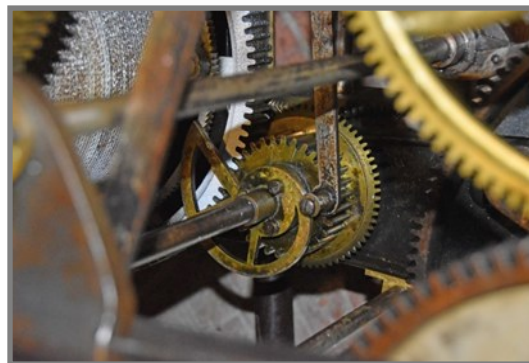
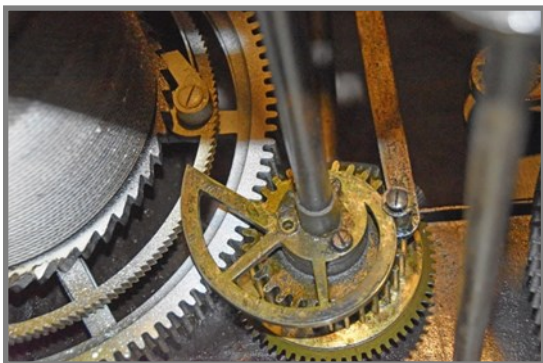


However, the Parish Council came up with a grant and after a couple of emails, a variety of parishioners kindly made some generous donations. Anne Parry, our County Councillor, agreed a Councillor grant of £100. The total at the last count (9/11/20) was **£675**, a fantastic effort from the community to look after one of our treasured heritage items.

This is the same community that did so much to look after others during lockdown.

The photos show Ali Speller winding up the clock and some detail of the mechanism. **Christmas quiz question** - can you see the 'rack' or its 'snail'?

A quick look on Wikipedia (https://en.wikipedia.org/wiki/Striking_clock#Parts_of_mechanism) shows that the amount the rack can fall, and thus the number of strikes, is determined by the position of the snail. So, the number of strikes is equal to the number of teeth of the rack that are used, which depends on the position of the snail.



A massive thank you is due to all of you who helped. Ali himself gives his own special thank-you to all those who helped contribute towards this worthy cause. (Photographs: John Carter) JD



Stop Press: More Good News!



Hampton Lucy Village Hall Fundraising Team are delighted to announce they have secured **£14,321** grant funding from Action Community in Rural England (ACRE) and £700 from Warwickshire County Council. This combined amount is a significant contribution to the £70,000 still needed to complete the refurbishment of the kitchen and toilets in the Hall. Whilst a significant sum still needs to be raised, these grants offer real hope the work can be completed in 2021. More information to follow next year. EH

Grapevine Contact Details

Grapevine copy by the **10th of the month** please, with a contact telephone number to: The Editor, Bridie Sullivan
Tel: 01789 470977. E-mail: grapevine2@btinternet.com



Halloween Treats in Hampton Lucy



A big thank you to Lisa who once again set up a 'Treasure Hunt', this time, a splendid Halloween Trail around the village. The hunt was over three days giving pleasure to the families and young children who participated but also to older members of our community who saw the youngsters scampering around and heard the shouts of glee when a pumpkin letter was spotted in a window. Once the letters were collected, a four word anagram had to be worked out. Correct entries were then pulled out of 'The Sorting Hat' and winners announced on the afternoon of the 31st. Congratulations to Porsha and Ryder who won the cauldron of goodies. £51 was raised for the Shakespeare Hospice. Donations can still be made on line.

Rumour has it that we may have a Christmas Hunt but it is all still under wraps and very hush hush!

Once night fell, the Pumpkin Competition was under way. Judges freshly awoken from their boxes toured the village. The five old fogeys were led by a member of the Parish Council, three judging, one

leaving handfuls of treats and a hanger-on taking photographs. All thoroughly enjoyed their torch-lit venture. The irony of the over-sixties being out and about was not missed!

The entries were quite amazing. Some pumpkins were a part of what could have been a theatre set whilst others, such as one in The Spinney, clearly had Grandad posing. Some Dads had used power tools to great effect. Woody of 'Toy Story' fame had been carved into a pumpkin. After a scary hour, the judges retired to a den for liquid refreshments (it was white but on reflection should have been red) and a pow wow.

We were delighted to deliver First prize to 4, Hithersand Close and in joint second place 2, Farthersand Close and 1, Bridge Street. The Parish council donated the first prize whilst some of the old fogeys helped with two other prizes and the treats.

HD



Wellesbourne & District Lions Club



Whoooo! We have a winner!

We had a super selection of 'Spooktacular' entries to our first Halloween Scary Scarecrow Competition! The competition attracted a total of 39 photo entries which were posted on our Facebook page and the winner was chosen by the number of 'likes' for each entry.

The winner was 'Boris de Frankenstein', the crazed creation of Dave and Carmel Coleman from Barford. Honourable mentions also go out to 'The Scarecrow Eater' by Charlie and Willow Holtom, 'Morose Maurice' by The Skinners and 'Woodcutter' by Katy Field (all 3 entries from Wellesbourne).

We raised an amazing £343.75 from entry fees and donations on our JustGiving page, and all monies raised will go towards supporting local charities.

Many thanks to the Co-Op for donating a £30 gift voucher for the winner and to everyone who took part. We can't wait for next year!

CE



Our correspondents this month:

AJW-Jeremy Whyman; **KG**- Karl Grevatt; **LB**-Lisa Barnett; **EH**- Eddie Hoare; **JD**-John Dunkerton; **HD**-Hilary Dunkerton; **CE**- Carol Evered **HD**; **MG** - Mary Gleaves;



NEWS FROM CHARLECOTE PARK



Winter Walks and Festive Treats

Enjoy winter and nature in the parkland from 9am - 4pm every day (last admission is 3pm). Warm up with festive take-away food and drink from the Wood Yard Cafe from 9:30am. The toilets, accessible toilets and baby changing facilities will also remain open.



Photograph: Jana Eastwood

We hope to re-open the Orangery shop in December (depending on Government guidance) for you to be able to find the perfect gift for family and friends.

The house remains closed until Spring, and the team continue with vital conservation work. Visitors can also enjoy our Critter Christmas mini artwork trail throughout the grounds this December featuring works donated by local artists.

Peter Rabbit at Charlecote
Young nature adventurers can lend a hand to some of Beatrix Potter's well-loved characters such as Squirrel Nutkin, Mr. Jeremy Fisher and Jemima Puddleduck. Solve the clues to earn a special trail badge and certificate on our Peter Rabbit™ winter adventure activity trail in partnership with Penguin Random House UK. Please check the website for more information on the art trail and Peter Rabbit activity which will have been finalised by the time you read this.
MG



Hampton Lucy and Charlecote WI AGM

There was an encouraging turn out for this important and very business-like meeting. Having said that, the six people who were in the back room of the pub (thanks to the Boars Head) had a jolly time too! Several people joined us in a Zoom meeting.

The committee was voted in en-bloc and we welcome new members Debbie Busby and Gill Danser. The onerous jobs of secretary will be shared, as will be that of treasurer.

It has been a difficult year but we did manage a few competitions. In first place, we have Helen Hoggarth and in second Anthea Cockshull. The much sought-after cups will be delivered. Equally exciting was the draw for our leftover wines from the days when we could party. Seven names were drawn by the young lady who served our drinks. The Christmas card charity this year will be the Shakespeare Hospice.

Looking to the future, we have booked Cathy Morris for our December Zoom meeting on the 2nd. Many of you will remember her from our April 2019 meeting. She will sing some of her vintage songs but also add a Christmas theme. As it will be our Christmas meeting, we are 'pushing the boat out' and hope for a good Zoom turn out. There will be a one-off competition and a fantastic prize, no not a bottle or cup this time.

The challenge is to decorate yourself for Christmas, shoulders up. So no need for holly where it might hurt. Last but not least, the AGM finished as we presented our President with a bouquet to show our thanks for her kindness and leadership throughout the last year and lockdown mark one.



HD





The Notice Board



The Hampton Lucy website:
www.hamptonlucy.wordpress.com

The Charlecote website:
www.charlecotevillagehall.weebly.com

The Loxley website:
www.loxleyvillage.com



Wellesbourne & District Lions Club

Charity No. 1061868

SANTA'S VIRTUAL VISIT TO OUR VILLAGES DECEMBER 2020

This year, Santa needs to **"elf-isolate"** in his grotto,
to ensure he can come to everyone at Christmas

The Lions have had a chat with Santa and, sadly, we think it would be safer for him not to take his sleigh round our villages with the Lions this year. Instead, Santa will be sending out greetings direct from his grotto. The Lions will broadcast Santa's message to you all just before Christmas via the Lions Facebook page. To help the Lions with their good works in the community, please consider making a donation to our funds so we can carry on supporting people during this difficult time. All you need to do is:

Make a donation in our virtual bucket: www.justgiving.com/campaign/WellesbourneLionsSanta Or scan this QR code to go straight to the bucket.



Follow the Wellesbourne Lions' Facebook page to see when Santa's greeting will be live (and to keep up to date with other Lions' activities in the community):
<https://www.facebook.com/wdlionsclub>

Any money donated will be shared with local organisations who support our villages throughout the year, so please give generously.

For more information, including alternative ways to donate (online banking, cheques) please email us at santa@wellesbourne-lions.org.uk or visit our webpage <http://www.wellesbourne-lions.org.uk/Santa.html>
If you do not have access to the internet, you can call us on 01789 841730 to find out how to donate a cheque or cash

CE



MERRY CHRISTMAS FROM SANTA AND ALL THE LIONS



The Grapevine

Volunteer Needed! Our current Treasurer would like to hand on this role to a new volunteer and we are hoping there is someone to step forward for this role. Advertising from The Grapevine enables us to publish our monthly edition so this is a key role to have in place. If you are able to help, please contact the Editor Tel no 01789 470977

Unique
Senior Care

People, above all else

At Unique Senior Care, we believe that people come before all else. Every part of our business is designed to put the customer's needs first.

- Companionship
- Local transportation
- Light housekeeping
- Specialist dementia care
- Meal preparation
- Shopping & much more

Call us in confidence on 01789 204040

www.uniquecare.co.uk



RUNABOUT TAXIS

- Wellesbourne, Kineton, Ettington, Loxley & Surrounding Villages
- 8 Seater Available • Competitive Village Rates
- Business /Account Customers Welcome
- Airport / Station / Hotel Transfers

Private Hire Advanced Bookings
Email: runabout@inbox.com
www.runabout.me.uk

Call: 07702 941748





Church Services



December 2020

6	Second Sunday of Advent			
	9.30 am	Charlecote	Morning Prayer	(CW)
	9.30 am	Loxley	Holy Communion	(BCP)
	6.00 pm	Hampton Lucy	Holy Communion	(CW)
13	Third Sunday of Advent			
	9.30 am	Hampton Lucy	Morning Prayer	(CW)
20	Fourth Sunday of Advent			
	11.00 am	Loxley	Holy Communion	(BCP)
	6.00 pm	Hampton Lucy	Christmas Praise	
24	Christmas Eve			
	11.30 pm	Barford	Midnight Mass	
	11.30 pm	Charlecote	Midnight Mass	
25	Christmas Day			
	9.30 am	Hampton Lucy	Christmas Worship	
	11.00 am	Loxley	Holy Communion	

Due to the ongoing Covid crisis we are unable to publish details of services for January 2021. Please refer to the *Barford Burble* for updates nearer to the time or ask your Churchwardens. Further information, when available, will be circulated using *The Grapevine* contacts list



Anna Watson Beauty Therapist

Professional beauty therapist offering full range of treatments from facials, all types of warm and hot wax, massage, tinting and facials Please check out my website: www.annawatsonbeauty.com Instagram: anna_warwickshire_beauty Facebook: Anna Watson Beauty Therapist Tel: 07876414423

Miri at Le Spa

An Idyllic Retreat for Bespoke Beauty

Visit our web site for a range of fabulous Treatments

www.miriatlespa.com Tel : 01789 773 857

2 Hatton Rock Business Centre, Hatton Rock, Stratford- Upon-Avon, CV37 0NQ

*Brush up your language skills,
Extra tuition for your child?*
Private French and Spanish lessons
by qualified local teacher
Over ten years' experience
All ages and abilities welcome
Group lessons or 1-2-1.

Contact: nw2translations@gmail.com



Electrician

Call Andy Punnett now
for a free quotation:



Tel: 01789 841 17
Free: 0800 511 8228
Mob: 07880 717 018



Victoria Gentle
Foot Health Practitioner
MCFHP MAFHP

Visiting Practice

All aspects of Footcare provided including:

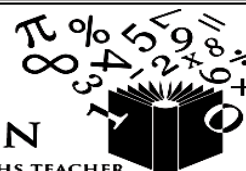
Ingrown Toenails/Corns/Calluses/Verrucae/
Diabetic Assessments

For friendly professional care in your own home call
Victoria on: **07507 953659**

Member of the British Association of Foot Health Professionals

MATHS TUITION

EXPERIENCED MATHS TEACHER
GCSE & INTERVENTION SPECIALIST
"John helped my son achieve an A* in his GCSE when his
predicted Grade was a B"
Contact John: **07876 592152**
email: john.eyes@btinternet.com





The Notice Board



Calling like-minded volunteers!

Hi, I'm Tass Smith and I live in Hampton Lucy with my family. Like you, I'm working hard to reduce the impact my lifestyle has on our beautiful planet. Sometimes it's hard to stay motivated and positive given the scale of the problems we're facing. So it occurs to me that I'm missing a trick. Out there, in our Grapevine community, there must be loads of like-minded people. And if we could only find each other, imagine what we could achieve together! If you're interested in joining me in this conversation and seeing where it takes us, do please get in touch (tassie68@gmail.com or 07769 683887). I look forward to getting to know you and making a difference, together.

TS

Local Service Providers

H T WILLIAMS PEST CONTROL

Rats, moles, mice, wasps, ants, insects

Green Cottage,

Little Kineton,

CV35 0DN

Call: 07375 296827

Hunscombe Farm Shop

Stratford Road, Wellesbourne

Tel: 01789 840240

'A Farmer's Market on your doorstep'

Open Tues to Thursday: 8.00am to 5.00pm

Friday: 8.00am to 6.00pm

Saturday: 8.00am to 5.00pm

SUSAN ENGLAND MCSP Chartered Physiotherapist

*Registered with the Health and Care Professions
Council*

Hampton Corner, Warwick Road,
Stratford upon Avon, CV37 0NZ

Tel/Fax: 01789 263891

Stripes Garden Maintenance

Grass Cutting, Hedge Trimming,
Patio Cleaning,
Garden Furniture Cleaning. No job too small.
Local reliable service.

Call Chris Clarke, 01789 295909

Mobile: 07928 895501

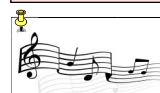
e-mail: stripeschris@aol.com

Juliet Seccombe CURTAINS & BLINDS

High quality
curtains and roman blinds.
Free measurement and quotation.

Mobile: 0781 809 8306

www.seccombecurtainsandblinds.co.uk



GUITAR LESSONS at Charlecote Village Hall

Learn from an award-winning musician
with 40 years' experience
in the music industry.

All ages and abilities welcome.

Call Allen on 07766 244177

www.allenmaslen.com

SHIPSTON HOME NURSING

VIRTUAL

**Christmas
Gift Fair**

Supporting local businesses online
visit **www.shipstonhomenursing.co.uk/giftfair**

9TH - 30TH NOVEMBER

Rebecca Gray
Chartered
Physiotherapist

Services Include:
Physiotherapy Treatments
Sports Injury Assessment
Acupuncture for Pain Relief
Pilates
Pre and Post Op Rehab
Gait Analysis
Home Visits

**Based at Hastings House Medical Centre,
Wellesbourne**

www.rgpandp.co.uk
T: 07919 363397
E: rgrayphysio@gmail.com

**hpcp
registered**

HAMPTON WILCOX

CHRISTMAS WREATHS

We are very excited to launch our new Christmas wreath making kits!

Each kit contain all the material you need including straightforward instructions to create your own masterpiece from the comfort of your own home. All you need to do is open the bag, and get started!

If making your own wreath is not your thing or you just don't have the time then never fear as we also have ready made wreaths available.

First 10 orders will receive 10% off - use code 'HWWreath10'

visit **www.hamptonwilcox.com/shop**